

2008

Wimba Classroom

Setup Instructions

Step by step instructions to get online, run the setup wizard, and enter the Wimba classroom for first time Wimba users.





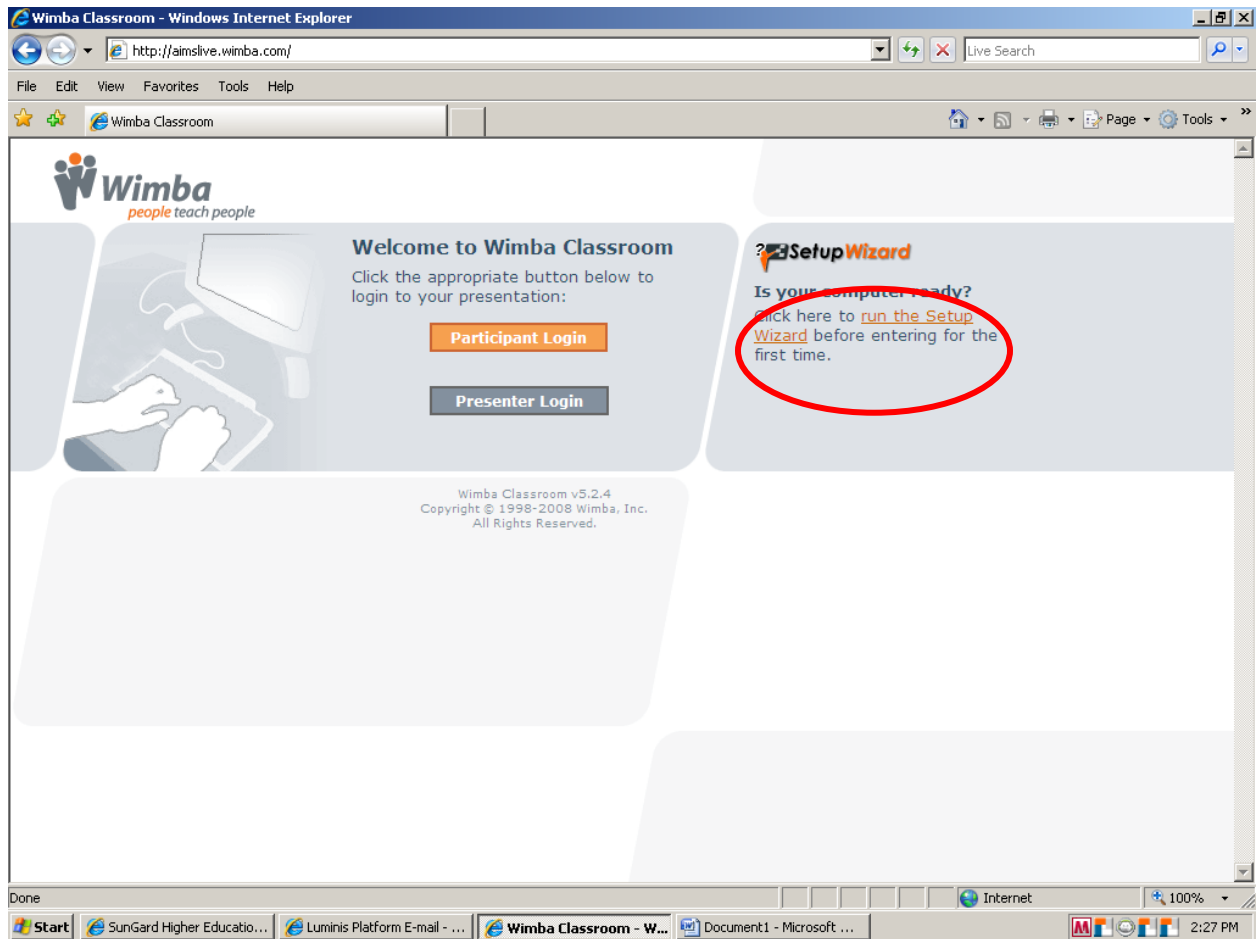
Video Instructions <http://www.youtube.com/watch?v=ghQaliTXWxo>

Step 1: Open Internet Explorer

Step 2: In the address bar, enter URL "aimslive.wimba.com"

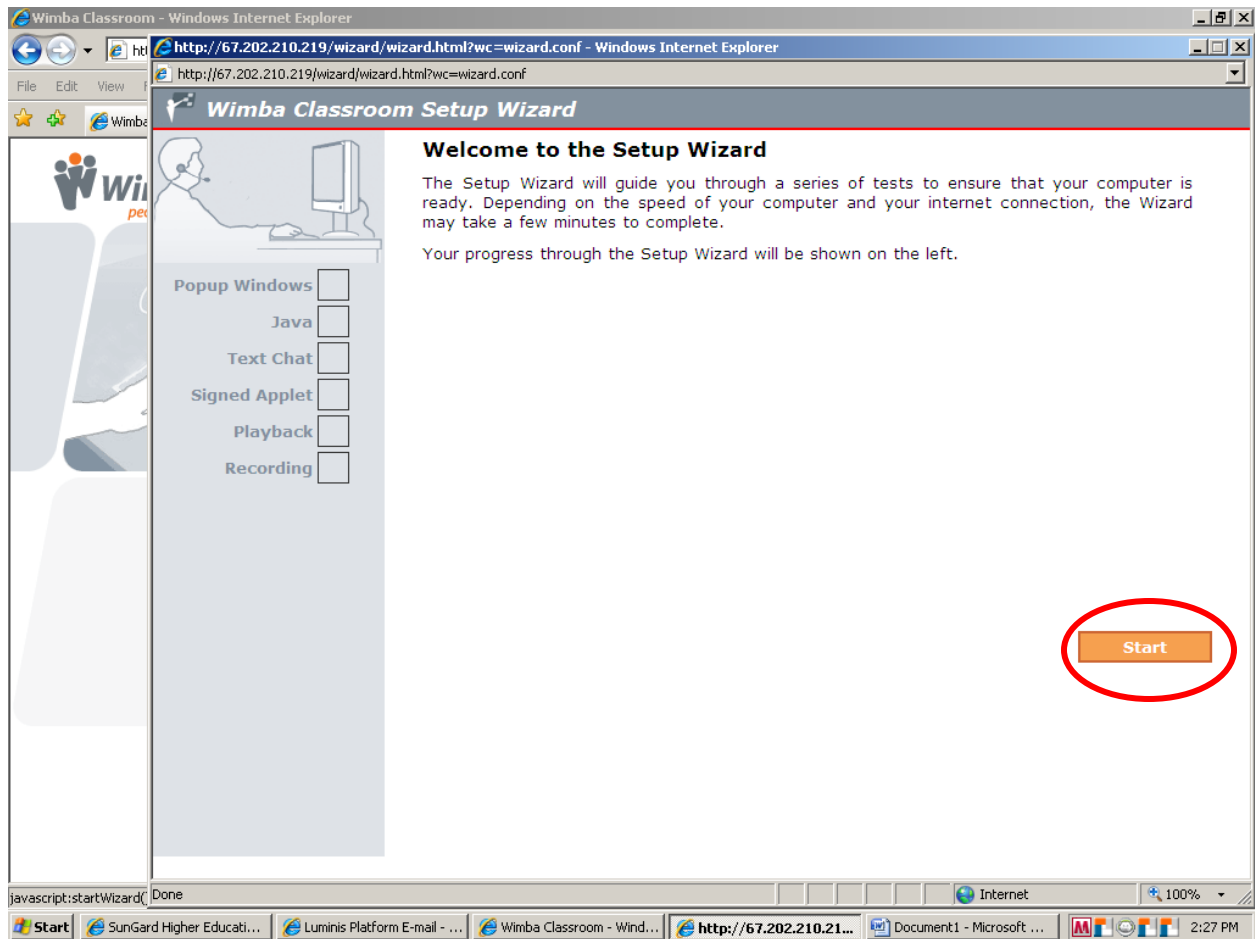
*Note: Do not use "www"

Step 3: Press **enter** or click the green arrow.

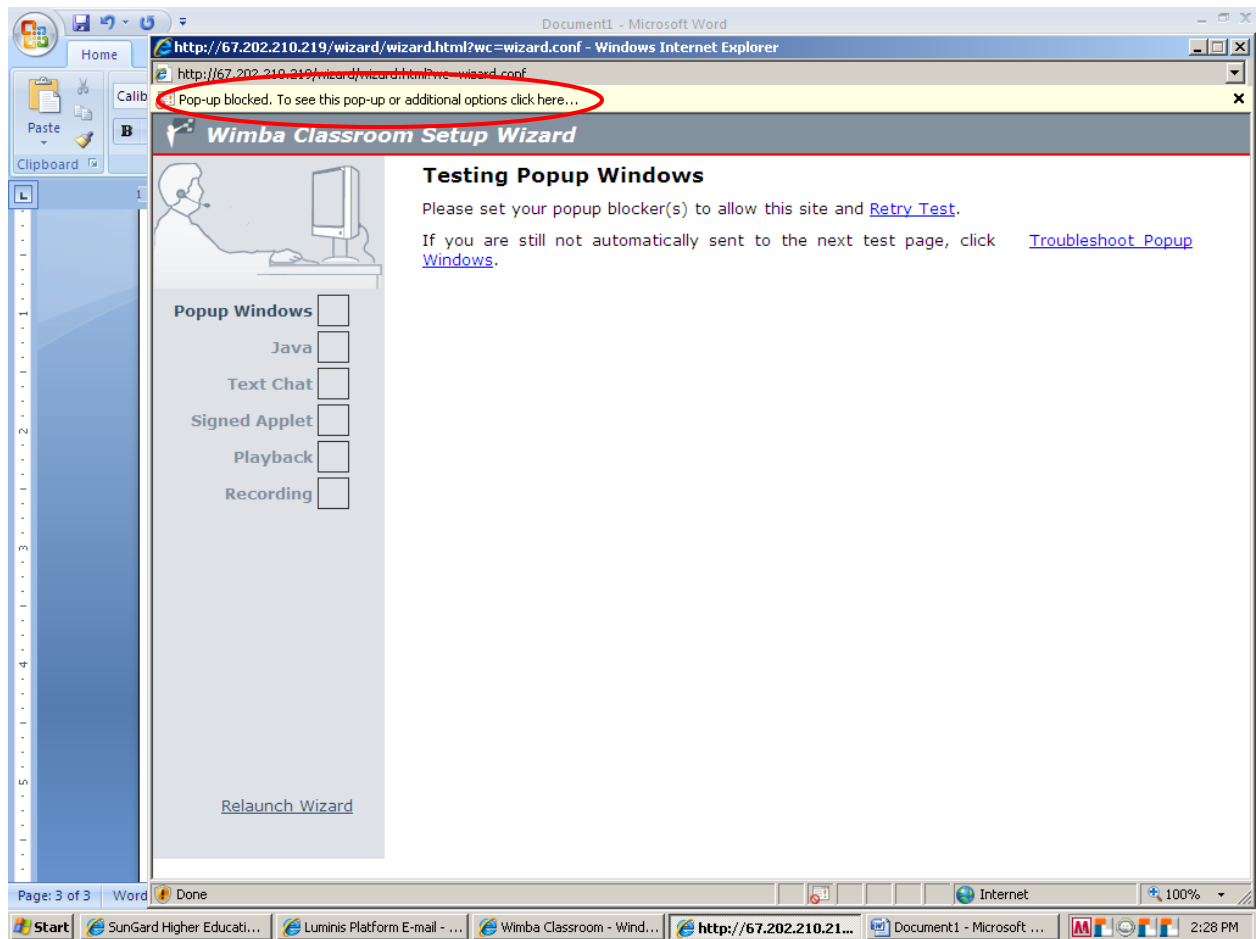


When running Wimba from home for the first time, or every time when using Wimba on campus, it is necessary to run the Setup Wizard.

Click **run the Setup Wizard** on this screen.

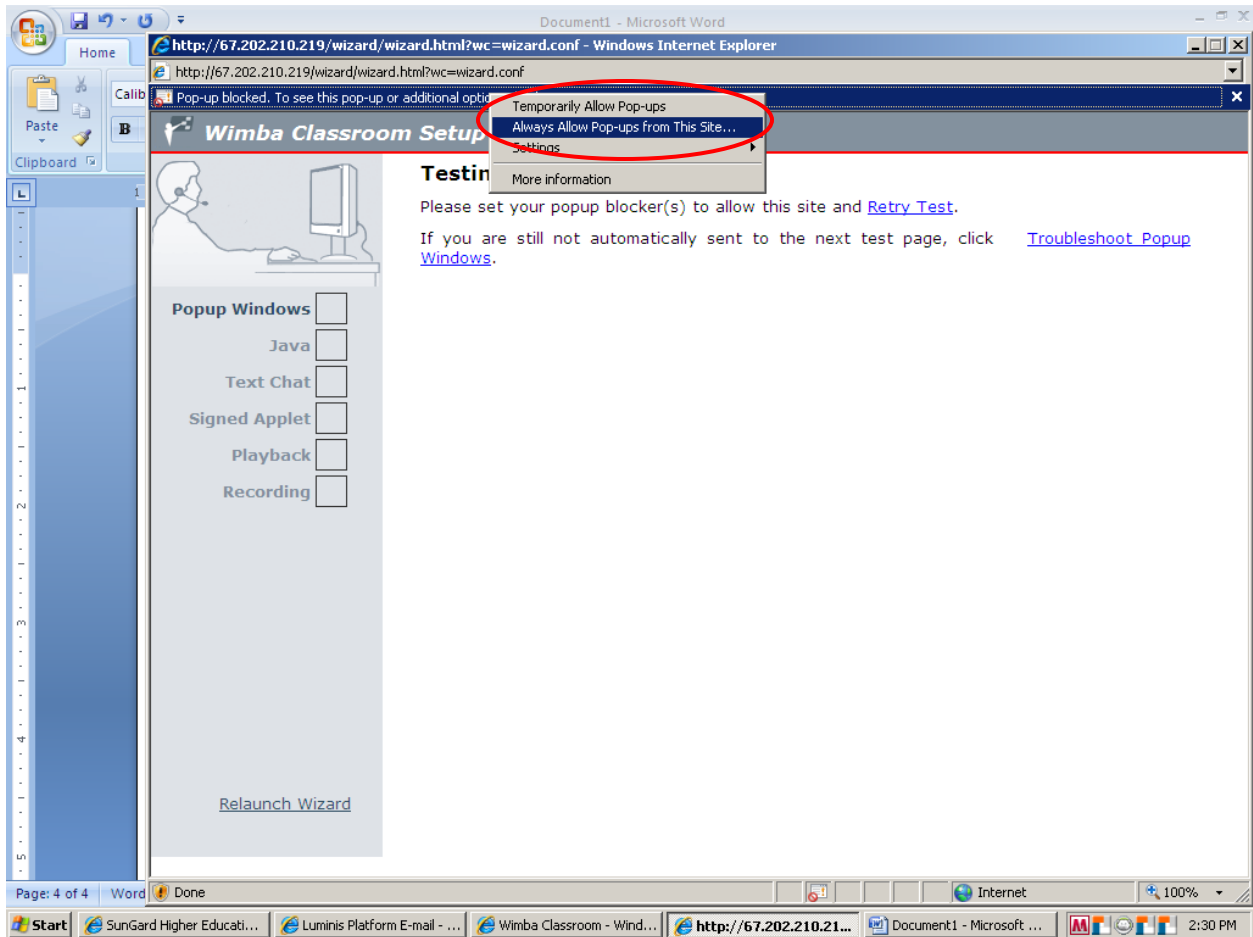


Now click **Start**.



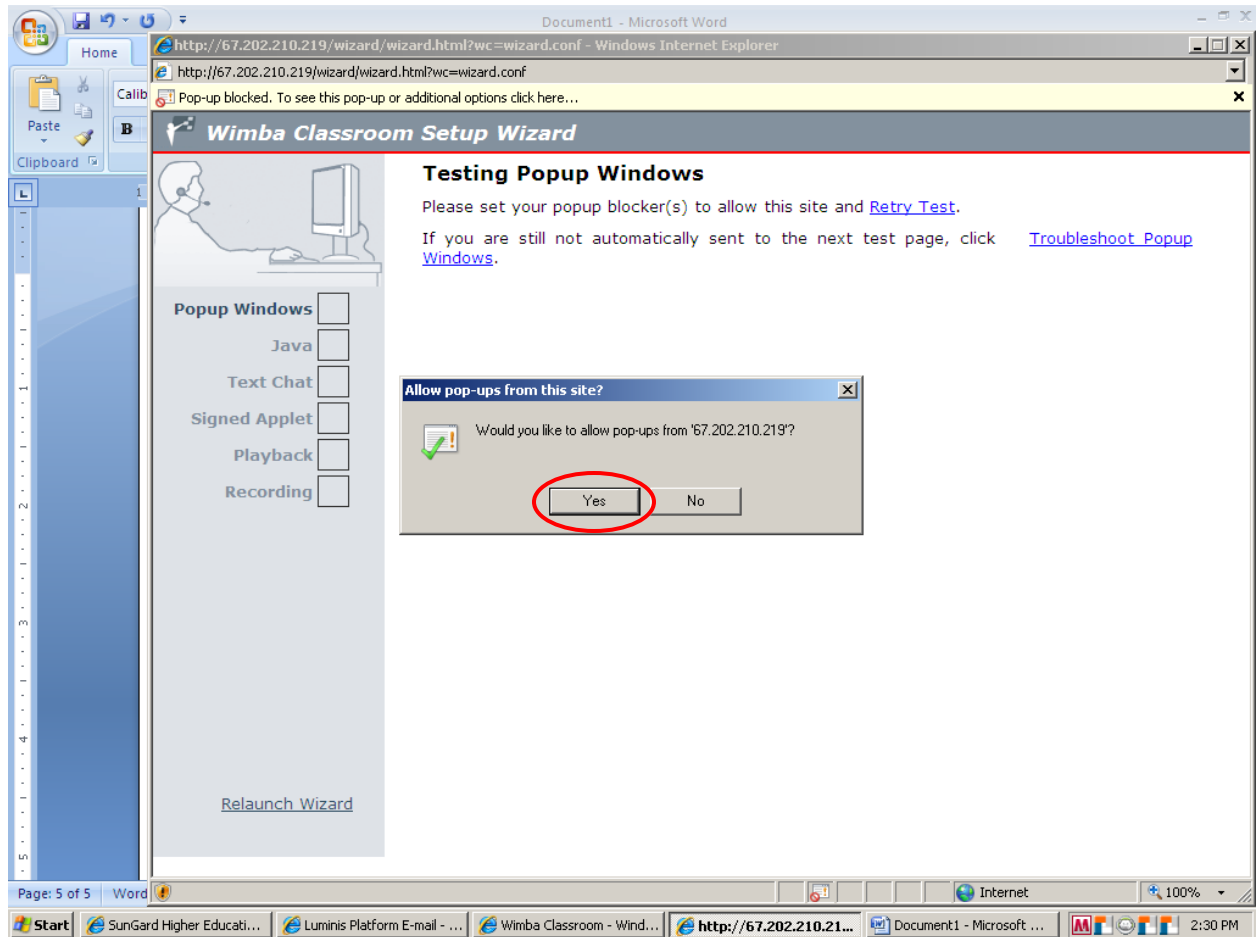
The Wizard will test for a popup blocker. If it detects a popup blocker, a bar will appear toward the top of the window that reads, “Pop-up blocked. To see this pop-up or additional options click here...”

Click on the **popup instruction bar**.



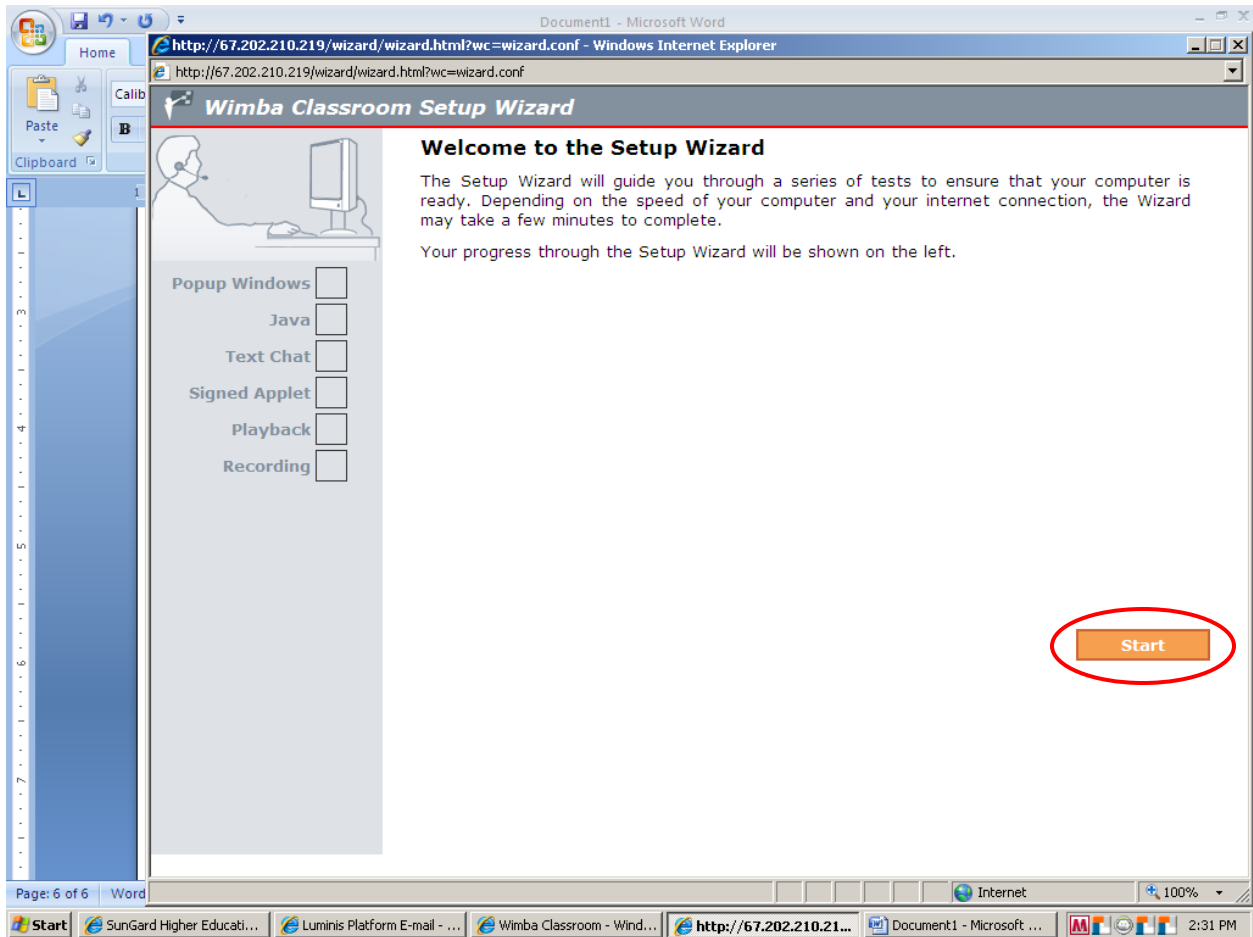
After clicking on the instruction bar, a drop down window will appear. Content from Wimba is always reliable and does not contain advertisements. It is safe to always allow pop-ups from Wimba.

Click Always Allow Pop-ups from This Site...



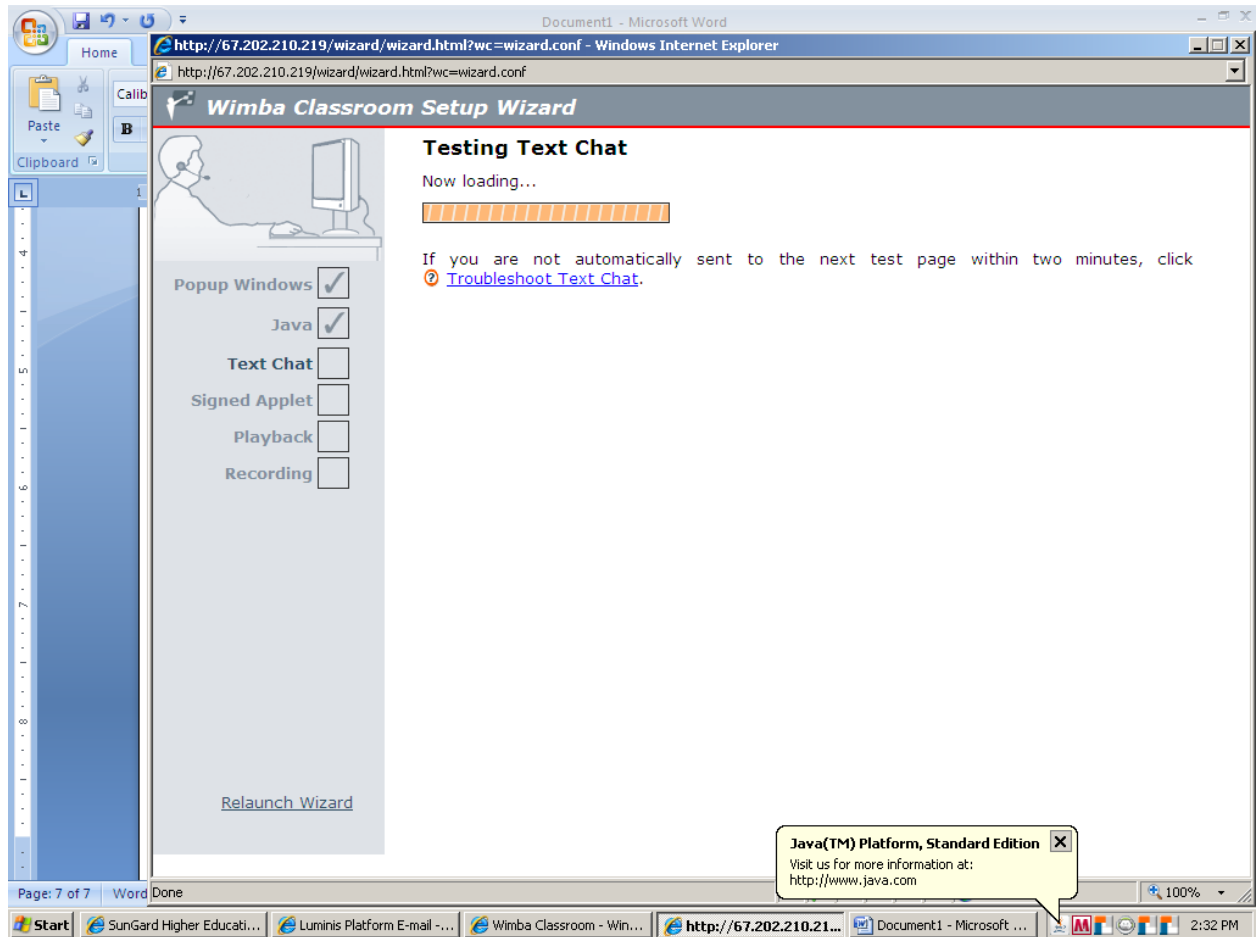
Internet Explorer will confirm that pop-ups are allowed from this site.

Click **Yes**.



After confirming that pop-ups are always allowed from Wimba, the Wizard will relaunch.

Click **Start**.



The Wizard will now start loading the next step.

Note the checkmarks next to Popup Windows and Java. This list of checkmarks shows the progress that has been completed.

Wait for the next prompt.

Document1 - Microsoft Word

http://67.202.210.219/wizard/wizard.html?wc=wizard.conf - Windows Internet Explorer

http://67.202.210.219/wizard/wizard.html?wc=wizard.conf

Wimba Classroom Setup Wizard

Allowing Signed Applet (instructions)

After clicking "Next", you will receive a "Warning - Security" popup window. When it appears, click "Always", "Run", or "Trust" to allow Wimba Classroom audio to run on your computer.

(If you have already used Wimba Classroom or passed the Setup Wizard, you may pass this test automatically.)

Click "Next" to proceed.

Popup Windows

Java

Text Chat

Signed Applet

Playback

Recording

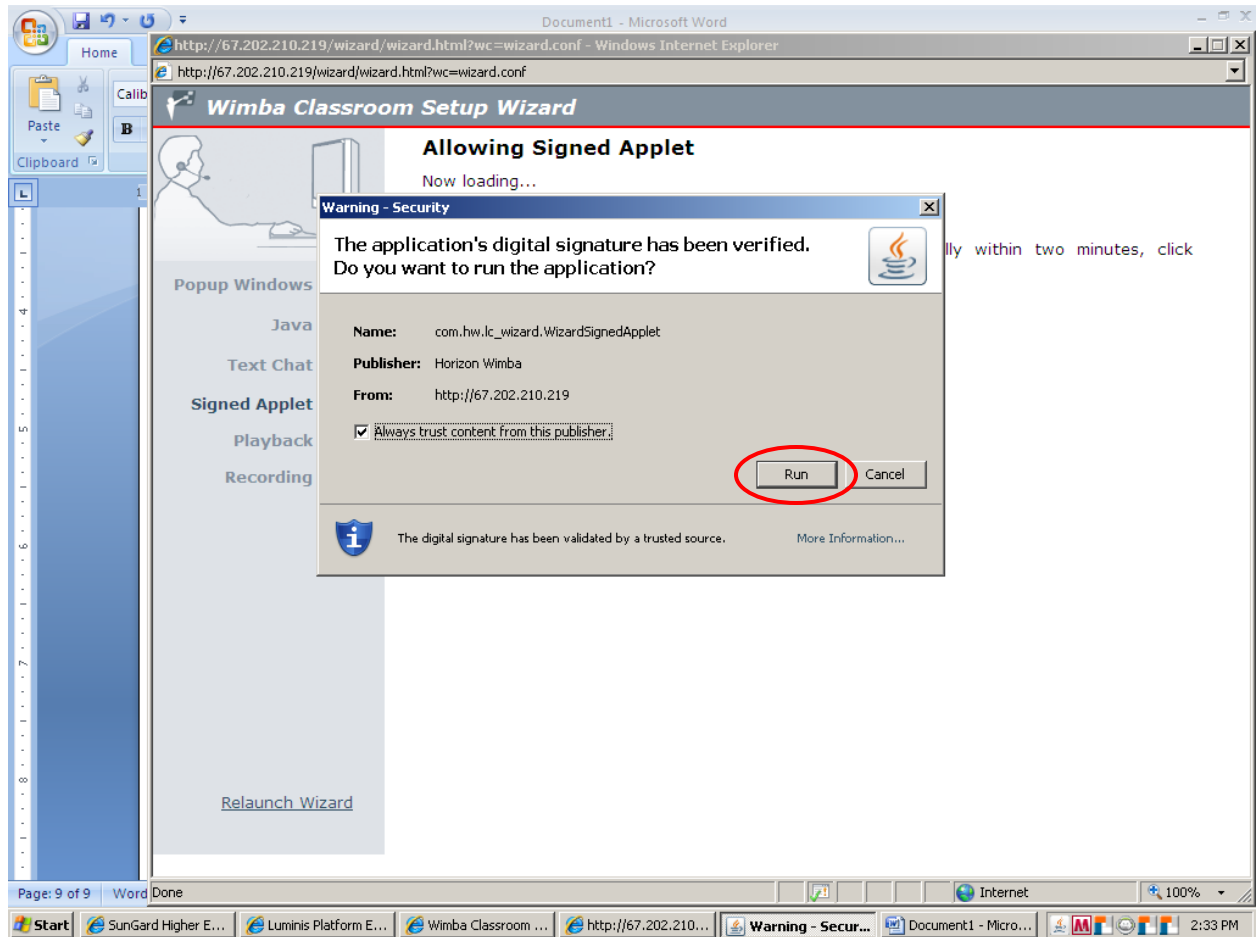
[Relaunch Wizard](#)

Next

Page: 8 of 8 Word Done

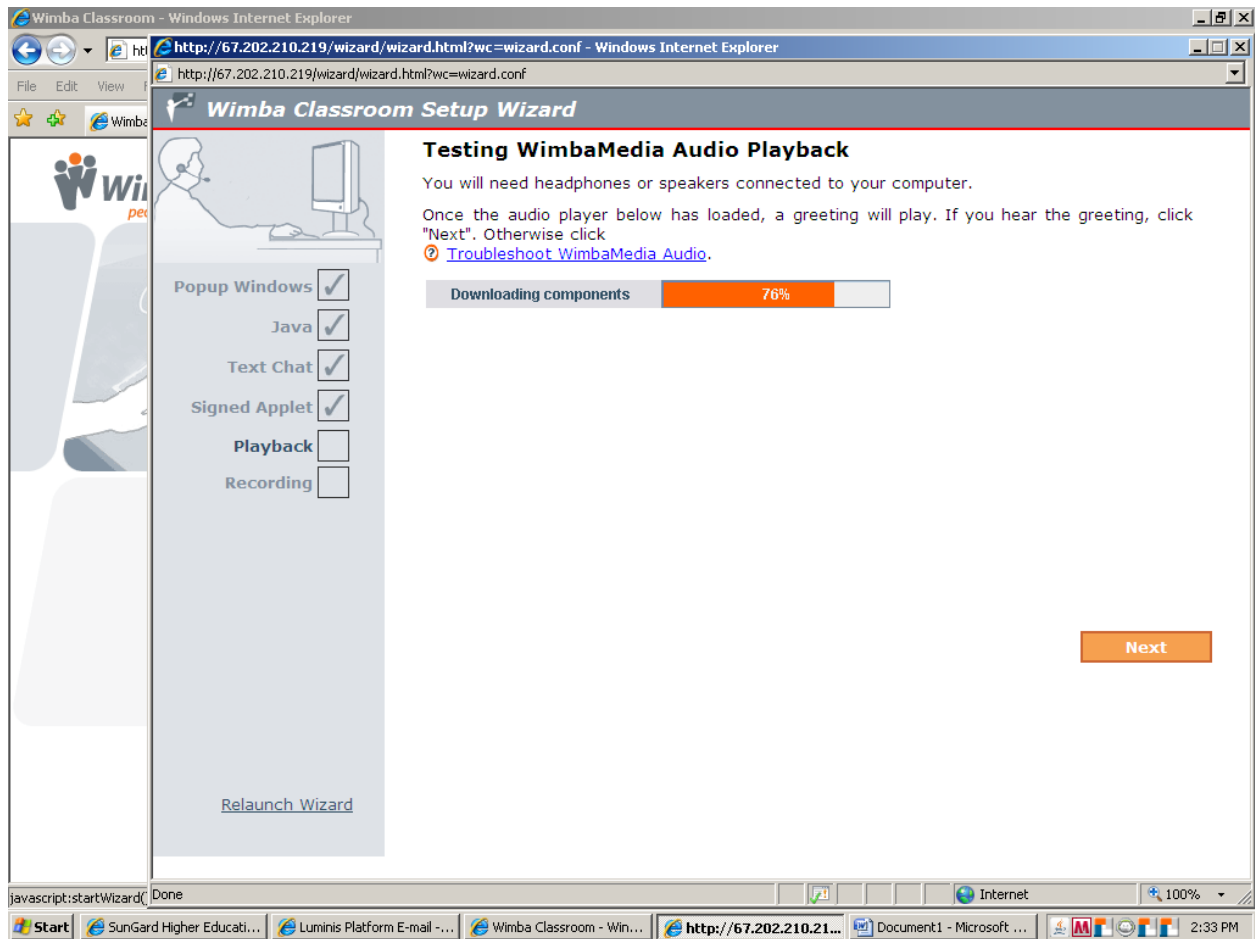
Start SunGard Higher Educati... Luminis Platform E-mail -... Wimba Classroom - Win... http://67.202.210.21... Document1 - Microsoft ... 2:33 PM

Click **Next**.



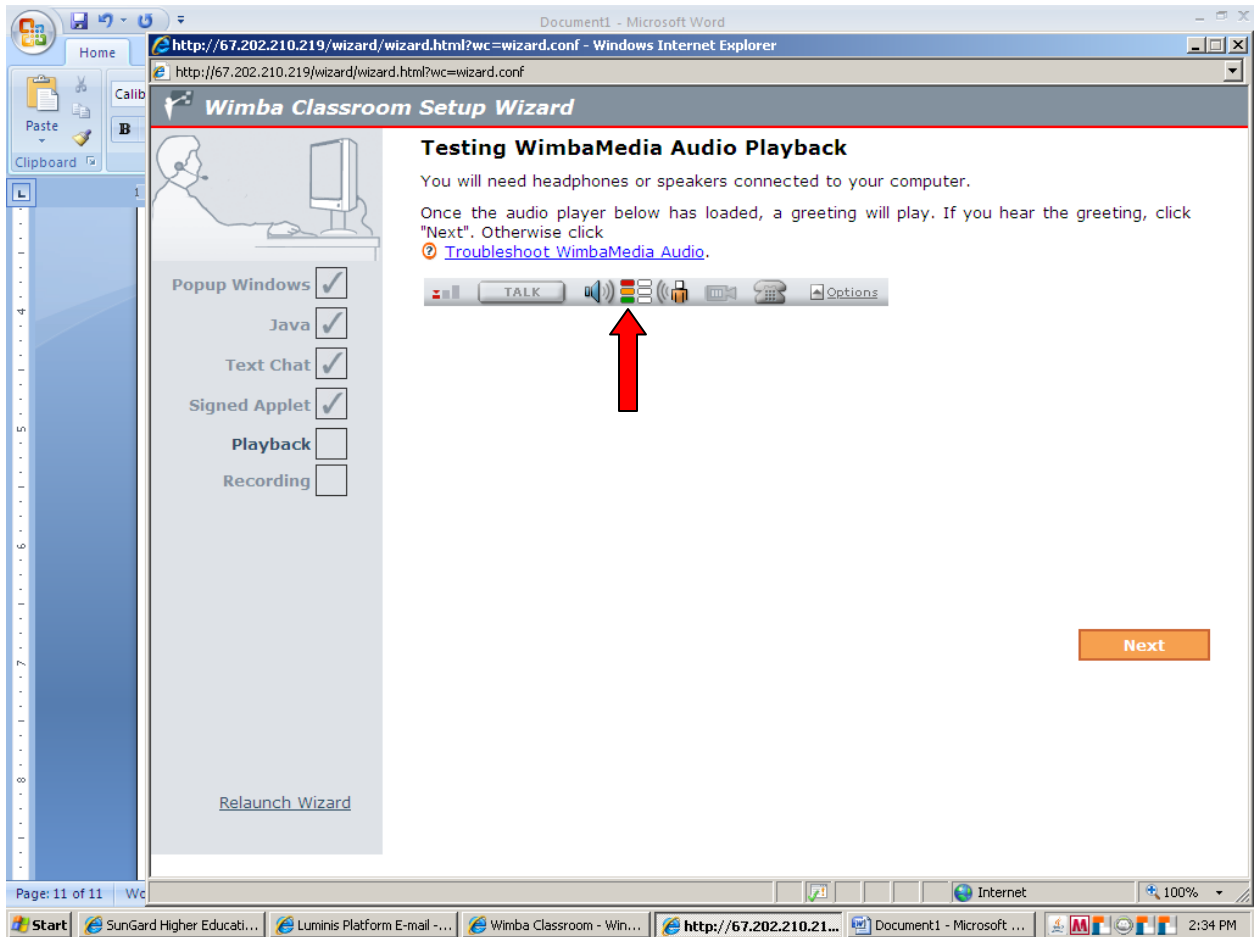
Wimba uses a Java Application for the chat feature. Java is safe to allow; leave the checkmark in the box next to “Always trust content from this publisher.”

Click **Run**.



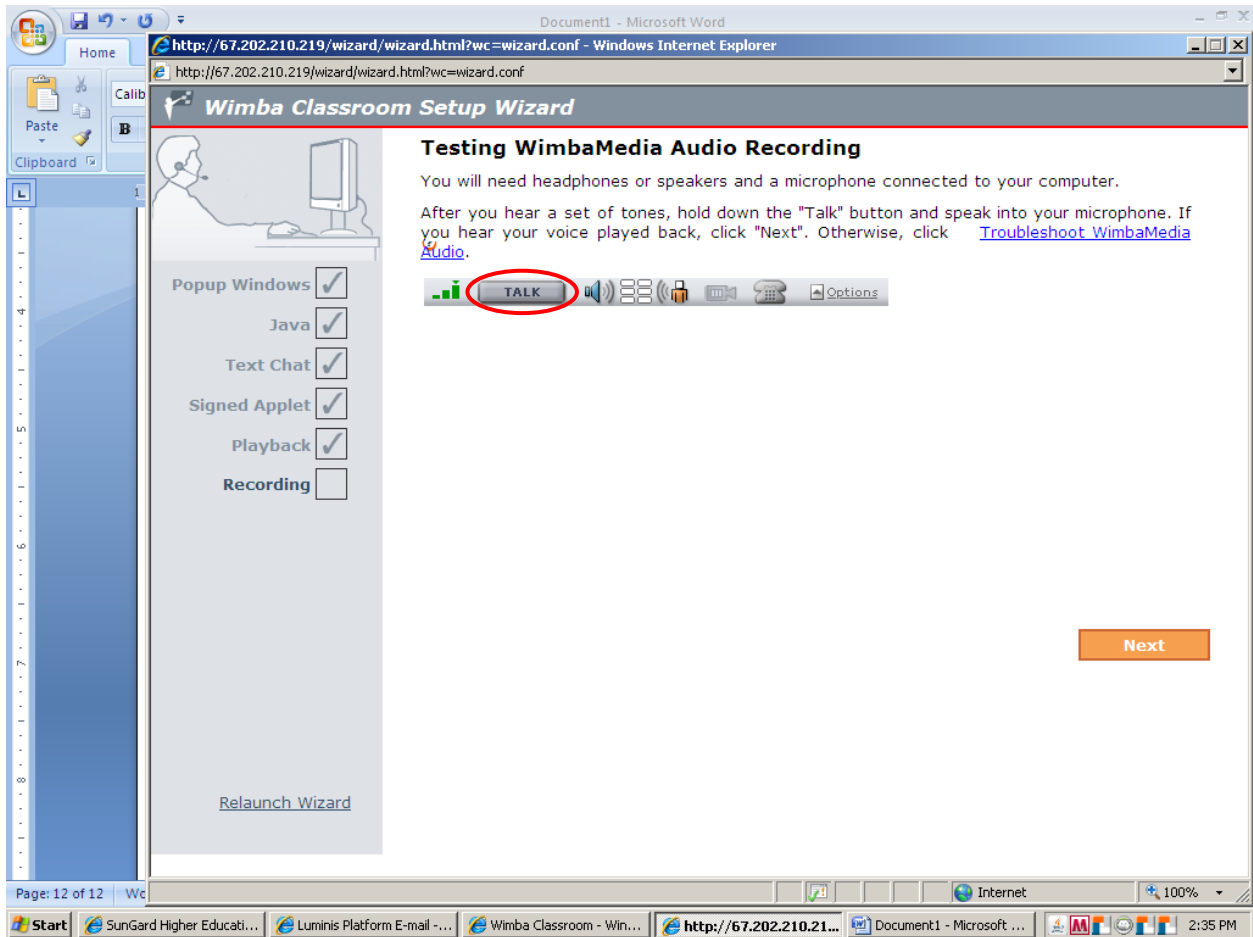
This window shows the process made while loading the next feature.

Wait until this content is finished loading.



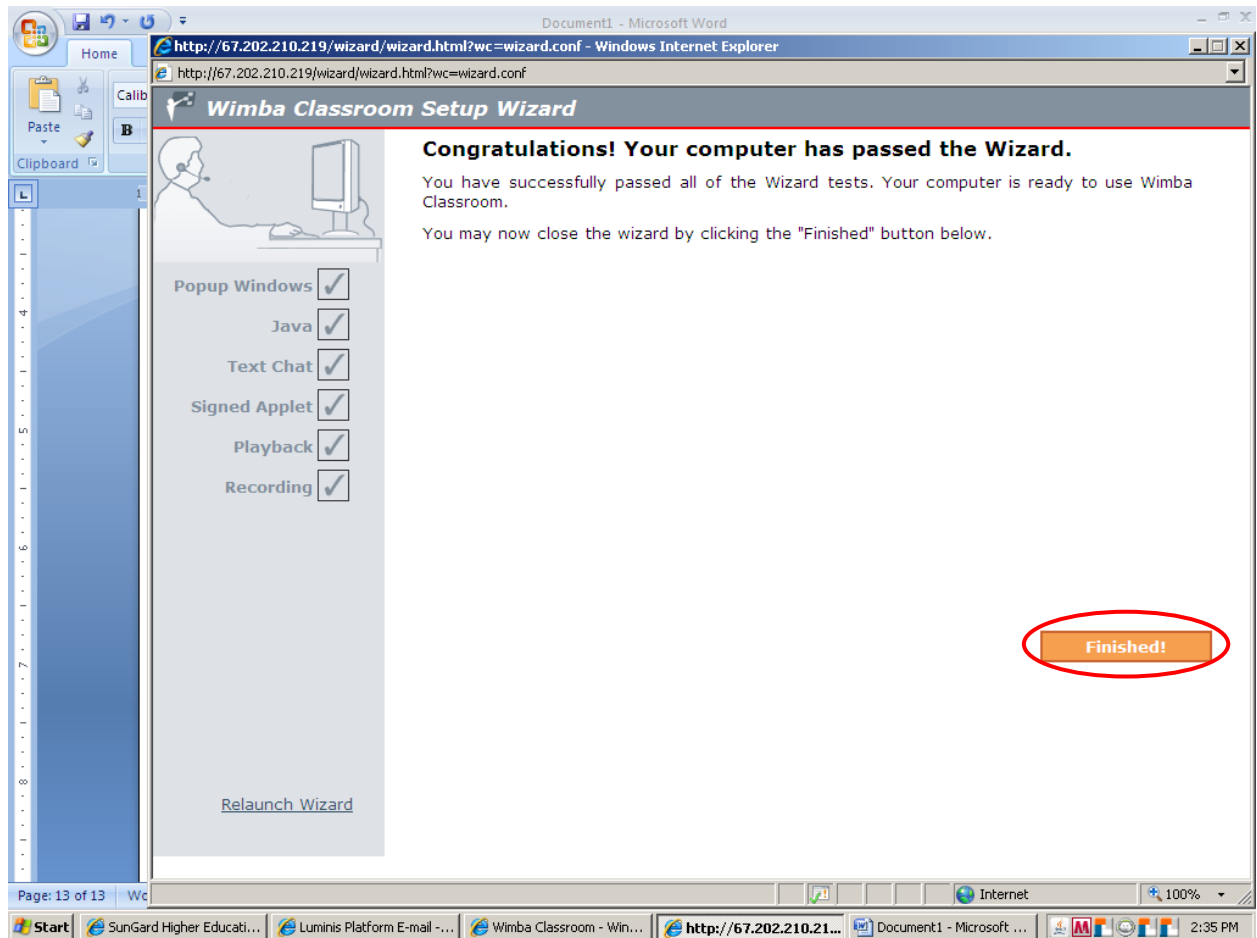
This window tests for the ability to receive audio playback. It is necessary to wear headphones or have speakers to test this function. Once the content is finished loading, the green, orange and red bars indicated by the arrow confirm that the message is playing. If the message cannot be heard, try adjusting volume controls. If the message still cannot be heard, click “Troubleshoot WimbaMedia Audio” or click **Next**. The instructor can possibly help address the audio problem, or contact Wimba technical support.

Once the greeting can be heard, click **Next**.



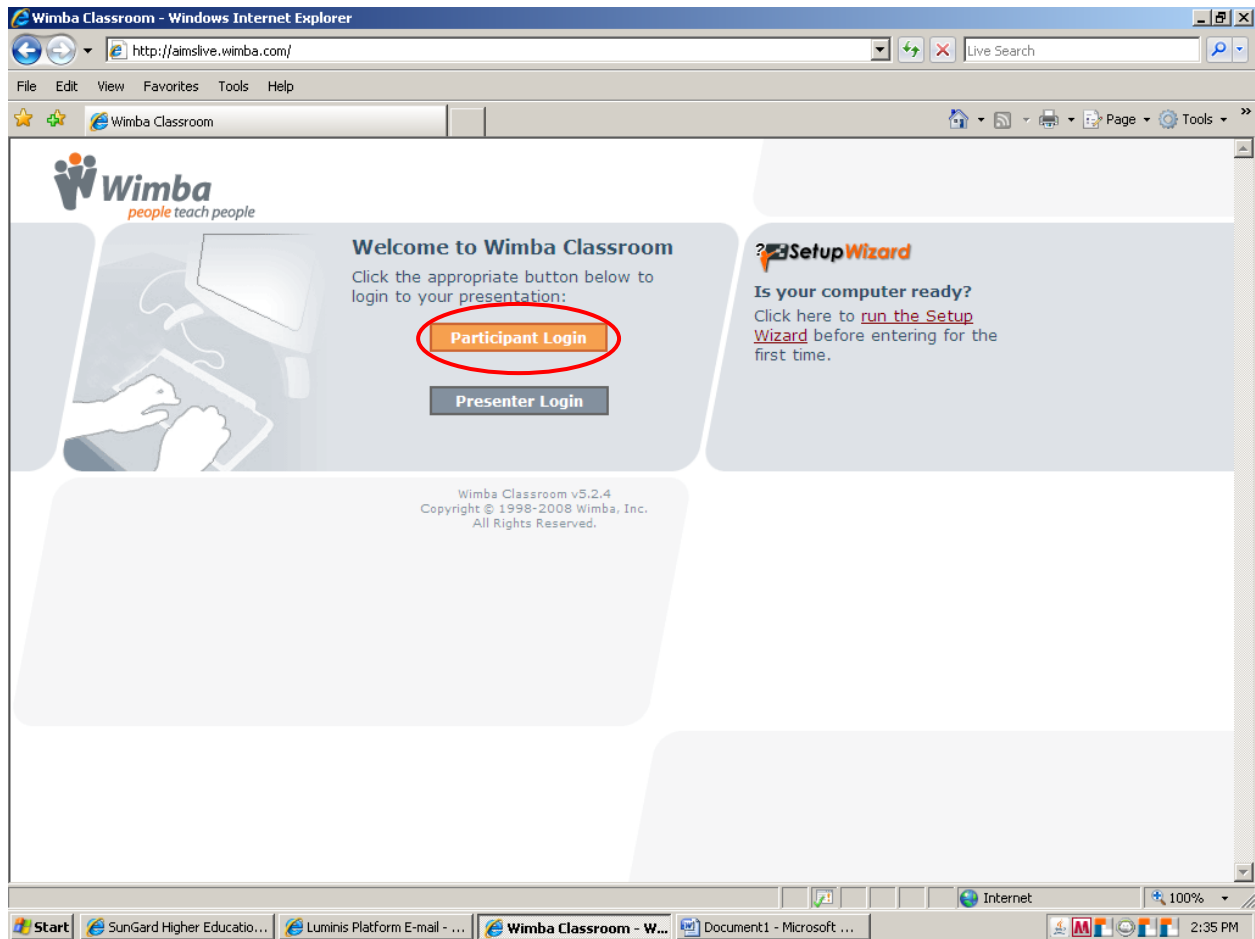
This window tests for the ability to create audio content. It is necessary to have a microphone or wear headphones with a microphone to test this function. Once the content is finished loading, click and hold down the “Talk” button. Release the button when finished speaking to hear what was said into the microphone being played back through the headphones or speakers. If the recording is not heard, check that the microphone is on and that the volume is adjusted. Try making a new recording. If the recording still cannot be heard, click “Troubleshoot WimbaMedia Audio” or click **Next**. The instructor can possibly help address the audio problem, or contact Wimba technical support.

Once the recording can be heard, click **Next**.



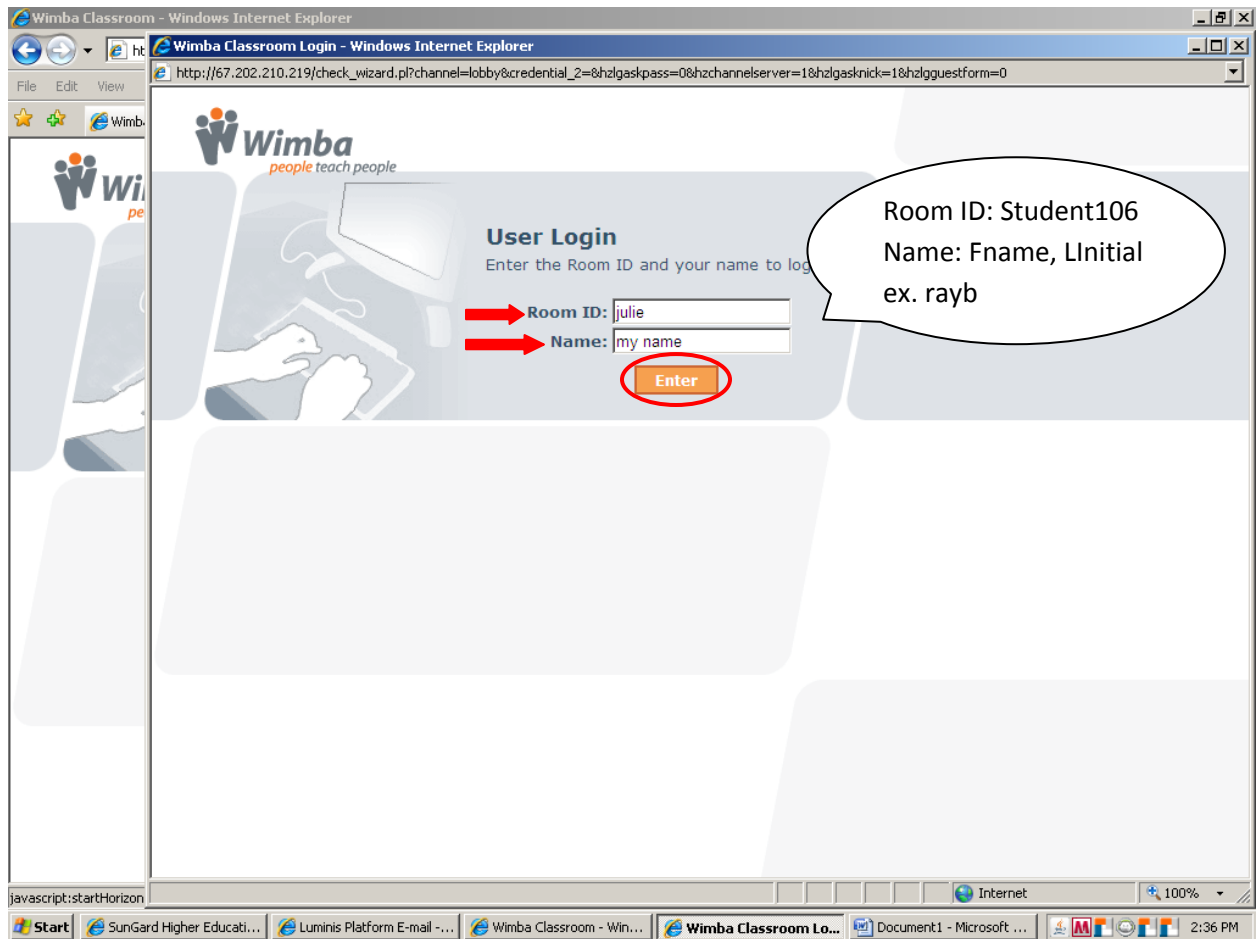
This window indicates that the Wizard has been successfully completed. Notice all checkmarks are filled in on the taskbar to the left.

Click **Finished**.



Once the Wizard has been completed, the original login window will appear.

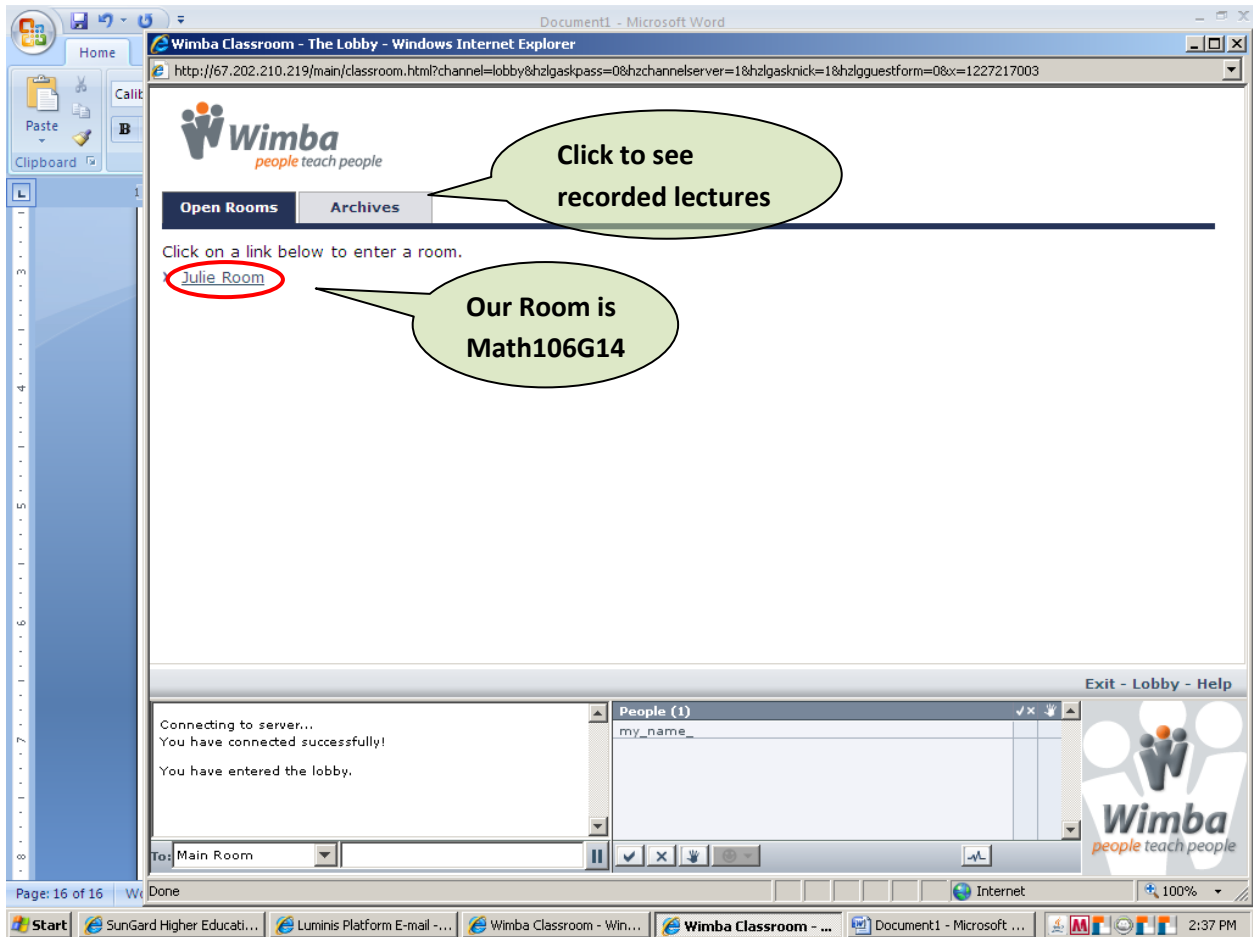
Click **Participant Login**.



A new window will open asking for the Room ID and Name of the participant.

*Note: These fields are case sensitive.

Fill in this information and click **Enter**.



With a successful login, a new window will appear showing the open rooms.

Click on the room that corresponds with the correct instructor's name; this will open the room where the actual session will take place.

For any additional questions or concerns regarding this process, please contact Wimba Technical Support:

<http://www.wimba.com/technicalsupport/>

(866) 350-4978

technicalsupport@wimba.com

Quick Guide

Video Instructions <http://www.youtube.com/watch?v=ghQaliTXWxo>

- 1) Open an internet browser (Internet Explorer, Firefox, Safari) and go to <http://aimslive.wimba.com>
- 2) Click **run the Setup Wizard** on this screen. (If you are using the computer to access Wimba for the first time)
- 3) If prompted allow pop-ups from this site (best choice is always)
- 4) Run through the security settings and Java Test
- 5) Test speakers and microphone by pressing the Talk Button
- 6) Once the Wizard has completed the system check, click participant log in
- 7) Room ID: Student106(case sensitive) Name: Your Name (Fname LInitial, ex:rayb) then click enter.
- 8) Select the room (Math106G14) or the archives tab if you are viewing a recorded session.
- 9) If participating via online, review the interface controls below.

Wimba Classroom - Math106G14 - Windows Internet Explorer

http://67.202.210.219/main/classroom.html?channel=lobby&hzlgaskpass=0&hzchannelserver=1&hzlgasknick=1&hzlguestform=0&x=1232830044

Welcome to 'Math106G14'

Some of the Wimba interface controls

Click to talk

Speaker & mic audio levels

Phone access if no microphone

Shows who is talking

Exit Wimba

Lobby & Archives

TALK

Options

Exit - Lobby - Help

Connecting to server...
You have connected successfully.
You have entered the lobby.
You have entered 'Math106G14'.
Your media format is Wimba.

Type Text chat then enter

People (1)

rayb

Yes - Check
No - X
Question - Hand
Status - Drop Down Menu

To: Main Room

Wimba
people teach people

Done

Internet

100%

The image shows a screenshot of a web browser displaying the Wimba Classroom interface. The browser title is "Wimba Classroom - Math106G14 - Windows Internet Explorer" and the address bar shows a URL. The main content area has a large grey box with the text "Welcome to 'Math106G14'". Below this, a blue speech bubble contains the text "Some of the Wimba interface controls". The interface includes a control bar with buttons for "TALK", speaker and microphone icons, and a phone icon. To the right of the control bar are buttons for "Exit - Lobby - Help". Below the control bar is a chat window with a list of people (currently "rayb") and a status menu. The status menu options are "Yes - Check", "No - X", "Question - Hand", and "Status - Drop Down Menu". A yellow callout points to the chat input field with the text "Type Text chat then enter". Other yellow callouts point to various icons and buttons, including "Click to talk", "Speaker & mic audio levels", "Phone access if no microphone", "Shows who is talking", "Exit Wimba", and "Lobby & Archives". The bottom of the browser shows the status bar with "Done", "Internet", and "100%" zoom.